

VENICE INLET - CASEY'S PASS SARASOTA COUNTY, FLORIDA AFTER-DREDGE COMPILATION 9-FOOT PROJECT FY20

SURVEY NOTES

- REFER TO SURVEY NO. 20-068. THIS SURVEY IS A COMPILATION OF AFTER-DREDGE SURVEYS PERFORMED UNDER CONTRACT 19-C-0019 (SURVEY 20-020).
 - SOUNDINGS ARE IN FEET AND TENTHS AND REFER TO NOAA'S REPORTED MEAN LOWER LOW WATER (MLLW) OF THE 1983-2001 TIDAL EPOCH.
 - TIDAL REDUCTIONS WERE OBTAINED UTILIZING A REAL-TIME KINEMATIC (RTK) GPS AND REFERENCED TO MLLW UTILIZING A HYPACK KINEMATIC TIDE DATUM (KTD) MODEL. KTD FILE NAME: "SPC-FL-WEST-2010-12-07.KTD".
 - ALL ELEVATIONS ARE BELOW THE CHART DATUM UNLESS PRECEDED BY A (+) SIGN.
 - PLANE COORDINATES ARE BASED ON THE TRANSVERSE MERCATOR PROJECTION FOR THE WEST ZONE OF FLORIDA AND REFERENCED TO NORTH AMERICAN DATUM OF 1983 (NAD83).
 - ALL STATIONING REFERS TO THE CENTERLINE OF THE CHANNEL.
 - THIS SURVEY WAS PERFORMED USING REAL-TIME KINEMATIC (RTK) GPS POSITIONING WITH THE FOLLOWING REFERENCE BASE LOCATION:
REFERENCE BASE LOCATED AT "C LISTOWSKI" (PID: BBDX69)
TIDE STAFF LOCATED AT "R-111"
 - DEPTHS DEPICTED BY THIS SURVEY ARE REFERENCED TO MLLW, TIDAL EPOCH 1983-2001, AS REPORTED BY THE NATIONAL OCEANIC AND ATMOSPHERIC ADMINISTRATION (NOAA). A MODIFIED VERSION OF NOAA'S VDATUM MODEL WAS USED TO CALIBRATE TO THE PUBLISHED MLLW HEIGHTS OF THE BENCH MARKS BELOW:
NOAA TIDAL STATION 872-5899 FOR ENTIRE PROJECT (PID: DL9719)
 - VERTICAL MEASUREMENTS WERE MADE USING AN EDGETECH 6205 COMBINED MULTI-BEAM AND SIDESCAN. ALL SOUNDINGS SHOWN ARE IN HIGH FREQUENCY.
- | VESSEL | DATE OF SURVEY | CUT |
|--------|----------------|---|
| SB-52 | 03 DEC 2019 | GIWW CUTS S-15A THRU S-17 |
| SB-52 | 04 DEC 2019 | VENICE INLET CUTS 2 - 4, GIWW CUT S-20 |
| SB-52 | 17 DEC 2020 | VENICE INLET CUTS 3-4, GIWW CUT S-16 PARTIALS |
- AIDS TO NAVIGATION WERE LOCATED DURING THIS SURVEY.
 - THE INFORMATION DEPICTED ON THIS MAP REPRESENTS THE RESULTS OF SURVEYS MADE ON THE DATES INDICATED ABOVE AND CAN ONLY BE CONSIDERED AS INDICATING THE GENERAL CONDITIONS AT THAT TIME. THIS CHART IS SOLELY FOR THE DISTRIBUTION OF AVAILABLE DEPTHS AT THE TIME OF THE SURVEY.
 - SURVEY ACCURACY PERFORMANCE STANDARDS, QUALITY CONTROL, AND QUALITY ASSURANCE REQUIREMENTS WERE FOLLOWED DURING THIS SURVEY IN ACCORDANCE WITH USACE EM 1110-2-1003, HYDROGRAPHIC SURVEYING, 30 NOV 2013.

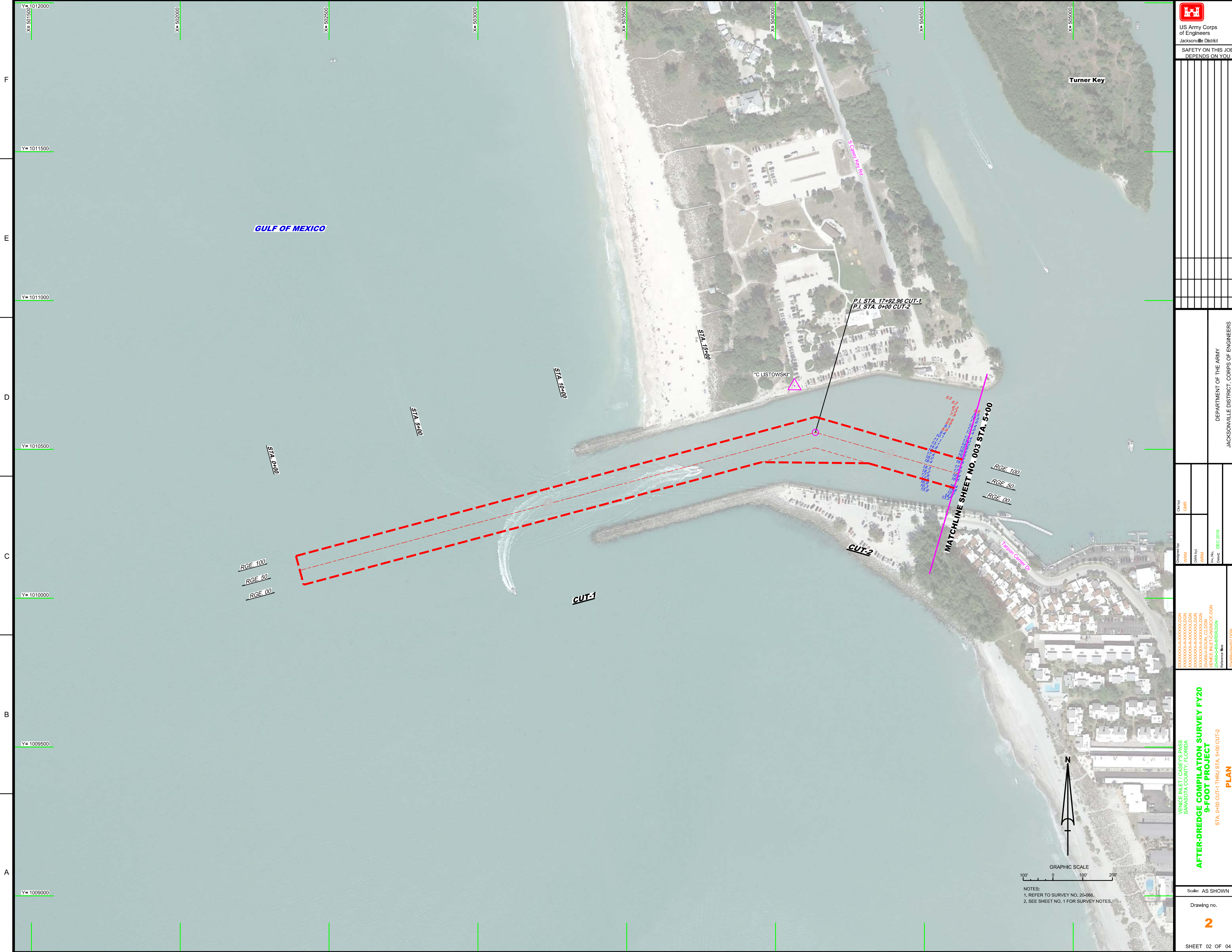
LEGEND	
	MONUMENT
	LIGHTED BEACON
	GREEN DAYBEACON
	RED DAYBEACON
	RED LIGHTED BUOY
	GREEN LIGHTED BUOY
	CAN BUOY
	NUN BUOY
	TIDE STAFF
	PROJECT DEPTH


US Army Corps of Engineers
Jacksonville District
SAFETY ON THIS JOB
DEPENDS ON YOU

DEPARTMENT OF THE ARMY
JACKSONVILLE DISTRICT, CORPS OF ENGINEERS
JACKSONVILLE, FLORIDA

VENICE INLET - CASEY'S PASS
SARASOTA COUNTY, FLORIDA
AFTER-DREDGE COMPILATION SURVEY FY20
9-FOOT PROJECT
INDEX, LOCATION AND VICINITY
MAP

Scale: AS SHOWN
Drawing no. 1
SHEET 01 OF 04




 US Army Corps of Engineers
 Jacksonville District
 SAFETY ON THIS JOB DEPENDS ON YOU

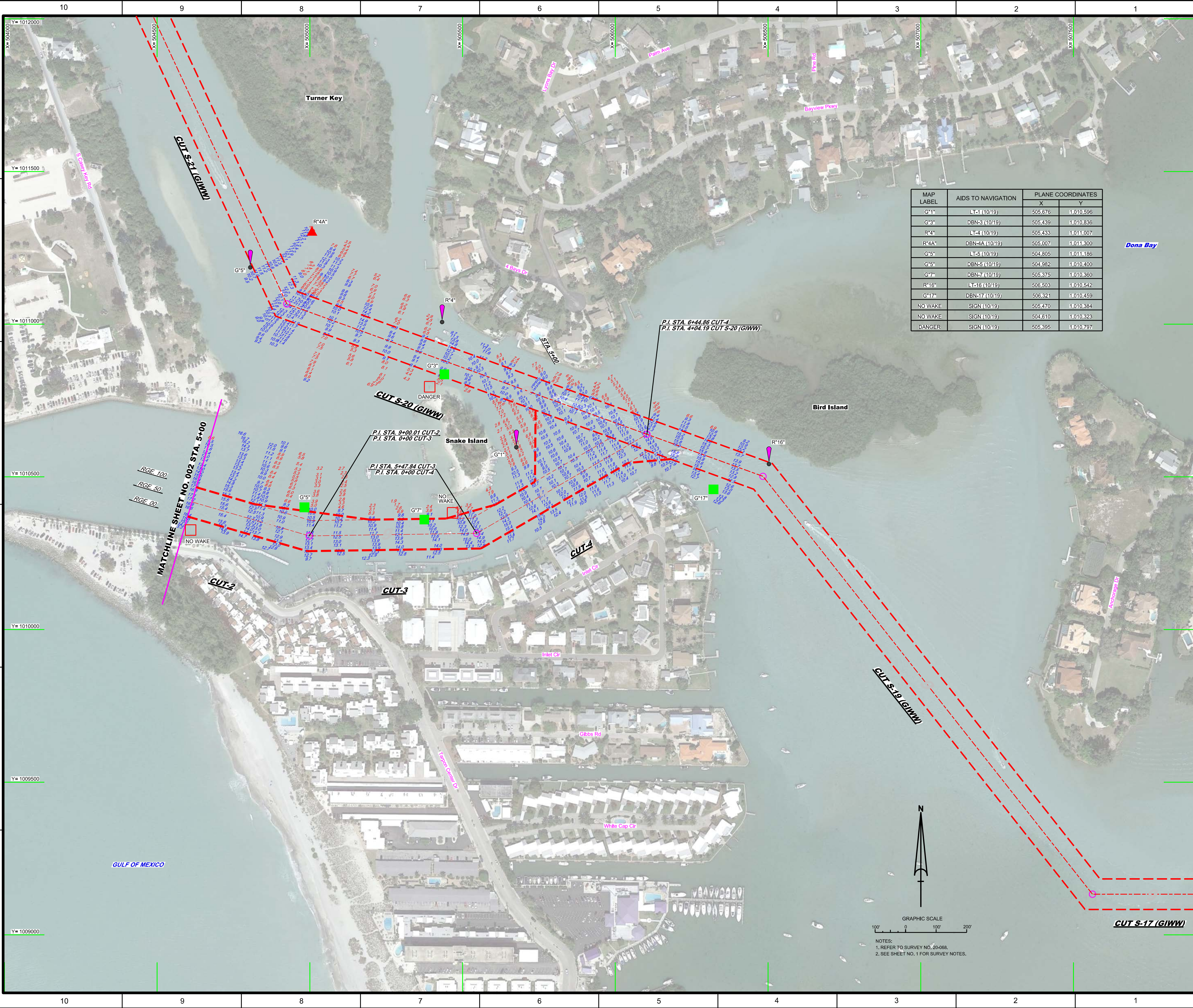
DEPARTMENT OF THE ARMY
 JACKSONVILLE DISTRICT, CORPS OF ENGINEERS
 JACKSONVILLE, FLORIDA

Drawn By: WRM
 Design Date: DEC 2019
 File Name: 20-068-1H-R02.DGN


AFTER-DREDGE COMPILATION SURVEY FY20
9-FOOT PROJECT
PLAN
 STA. 0+00 CUT-1 THRU STA. 5+00 CUT-2

Scale: AS SHOWN
 Drawing no. **2**
 SHEET 02 OF 04

NOTES:
 1. REFER TO SURVEY NO. 20-068.
 2. SEE SHEET NO. 1 FOR SURVEY NOTES.



MAP LABEL	AIDS TO NAVIGATION	PLANE COORDINATES	
		X	Y
G*1*	LT-1 (10/19)	505.676	1,010.596
G*3*	DBN-3 (10/19)	505.439	1,010.836
R*4*	LT-4 (10/19)	505.433	1,011.007
R*4A*	DBN-4A (10/19)	505.007	1,011.300
G*5*	LT-5 (10/19)	504.805	1,011.186
G*5*	DBN-5 (10/19)	504.982	1,010.400
G*7*	DBN-7 (10/19)	505.375	1,010.360
R*16*	LT-16 (10/19)	506.503	1,010.542
G*17*	DBN-17 (10/19)	506.321	1,010.459
NO WAKE	SIGN (10/19)	505.470	1,010.384
NO WAKE	SIGN (10/19)	504.610	1,010.323
DANGER	SIGN (10/19)	505.395	1,010.797



US Army Corps of Engineers
Jacksonville District

SAFETY ON THIS JOB
DEPENDS ON YOU

DESIGNED BY: WRM
CHECKED BY: GHR
DATE: DEC 2019

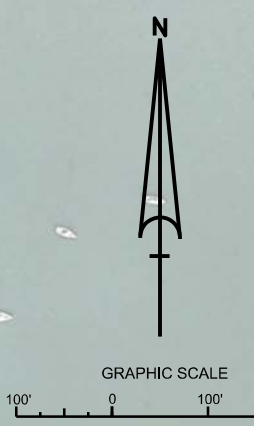
VENICE INLET / GASEY'S PASS
SARASOTA COUNTY, FLORIDA
**AFTER-DREDGE COMPILATION SURVEY FY20
9-FOOT PROJECT**
PLAN
STA. 5+00 CUT-2 THRU STA. 9+44.86 CUT-4

DEPARTMENT OF THE ARMY
JACKSONVILLE DISTRICT, CORPS OF ENGINEERS
JACKSONVILLE, FLORIDA

Scale: AS SHOWN

Drawing no. **3**

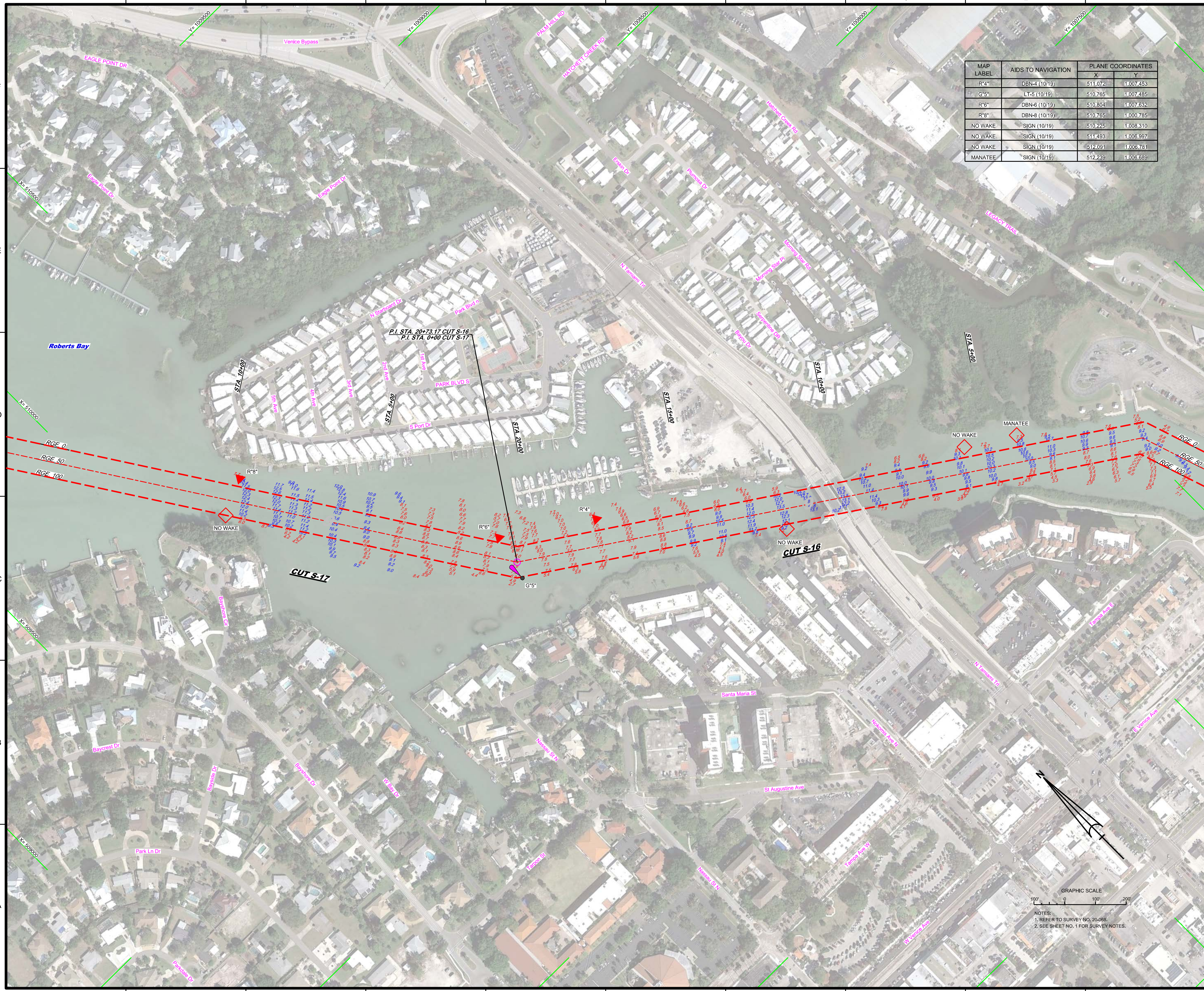
SHEET 03 OF 04



NOTES:
1. REFER TO SURVEY NO. 20-068.
2. SEE SHEET NO. 1 FOR SURVEY NOTES.



MAP LABEL	AIDS TO NAVIGATION	PLANE COORDINATES	
		X	Y
R*4	DBN-4 (10/19)	511,072	1,007,453
G*5	LT-5 (10/19)	510,765	1,007,485
R*6	DBN-6 (10/19)	510,804	1,007,632
R*8	DBN-8 (10/19)	510,765	1,008,785
NO WAKE	SIGN (10/19)	510,225	1,008,310
NO WAKE	SIGN (10/19)	511,493	1,006,997
NO WAKE	SIGN (10/19)	512,091	1,006,781
MANATEE	SIGN (10/19)	512,239	1,006,689



Zone	Scale	Units

DEPARTMENT OF THE ARMY
JACKSONVILLE DISTRICT, CORPS OF ENGINEERS
JACKSONVILLE, FLORIDA

Designed by: GHR
Checked by: GHR
Drawn by: WRM
Reviewed by: WRM
Date: DEC 2019
Reference files: 201805-05-BRIALDON, 201805-05-201805-05-05, 201805-05-201805-05-05, 201805-05-201805-05-05

AFTER-DREDGE COMPIATION SURVEY FY20
9-FOOT PROJECT
PLAN
VENICE INLET / CASEY'S PASS
SARASOTA COUNTY, FLORIDA
STA. 1+00 CUT S-16 THRU STA. 14+00 CUT S-17
Scale: AS SHOWN
Drawing no. **4**
SHEET 04 OF 04

NOTES:
1. REFER TO SURVEY NO. 20-098.
2. SEE SHEET NO. 1 FOR SURVEY NOTES.